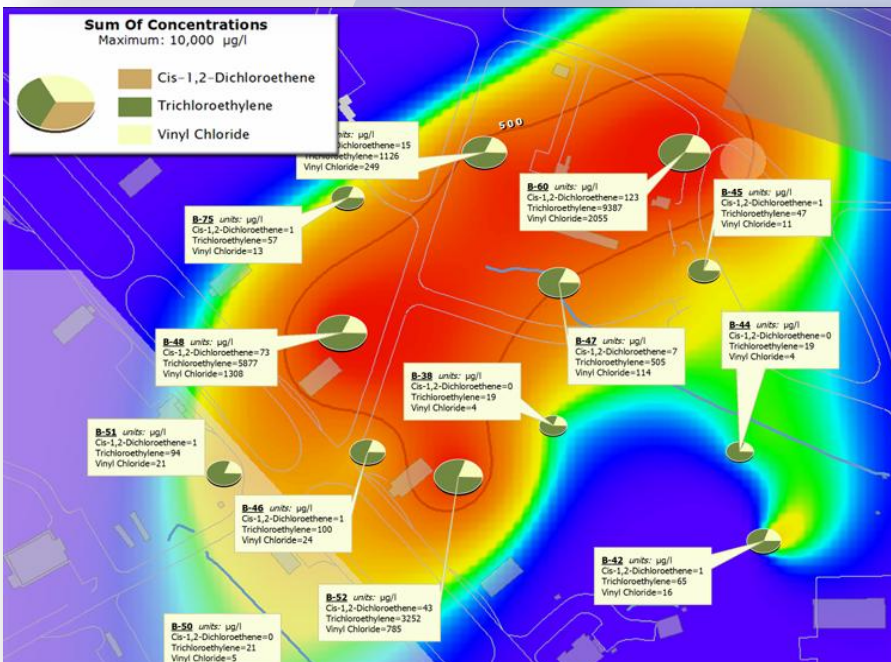
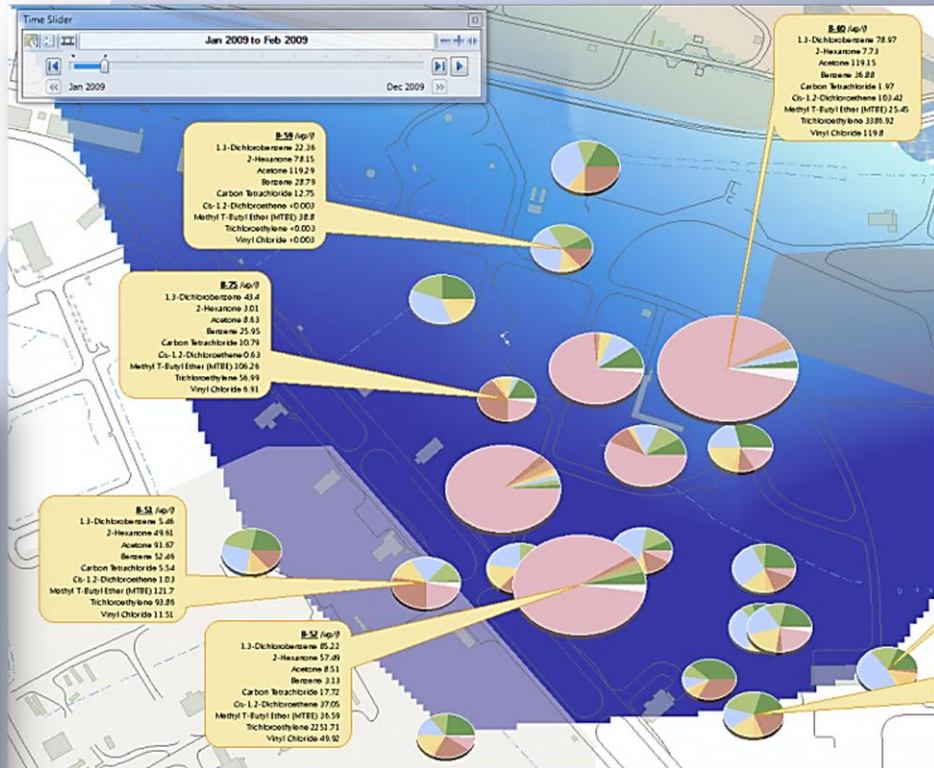
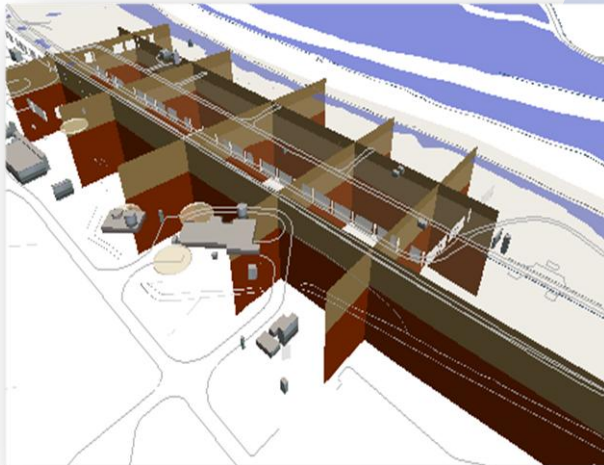


EQUS™ for ArcGIS

Adds powerful environmental modules and utilities enhancing the capabilities of ESRI's ArcMap and ArcScene desktop GIS applications. ArcView, ArcEditor, or ArcInfo can be used to create, query, map, analyze, and report from EQUS project databases while seamlessly integrating the GIS with industry-leading third-party software.

ArcGIS 10 Support

Supports ESRI's ArcGIS 10 in addition to 9.3.x. Takes advantage of ArcGIS 10 features including time-aware layers, default geodatabases, query layers, basemap layers, and ArcGIS metadata.

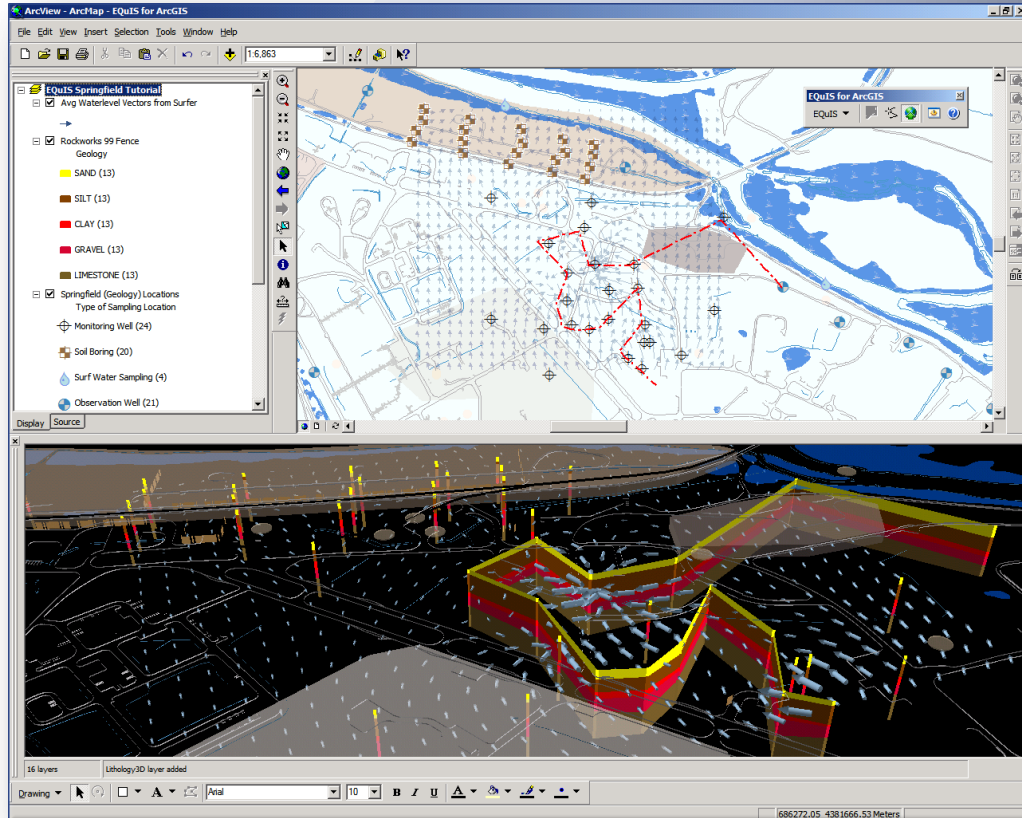


EZView LayerBuilder

Queries data from EQUS Professional and Enterprise with EZView: a hierarchical tree view helps refine search criteria querying analytical results or groundwater elevations from EQUS databases. The resulting queries are opened as layers stored in geodatabases, or as dynamic layers with live links to EQUS databases.

Interfaces to Leading Environmental Applications

EQuIS for ArcGIS interfaces with HoleBASE, EnviroInsite, RockWorks, LogPlot, GMS, gINT, EVS/MVS, Surfer, and other tools for creating boring Well logs, geologic fences, tabular labels (spider diagrams), and contours seamlessly from ArcMap and ArcScene.



Extends the Platform

Several non-environmental features enhancing ArcGIS are also included:

- 3D Preview Window for ArcMap
- Layer properties 'Metadata' tab for viewing and editing from ArcMap/ArcScene
- Create 3D Features module that creates multipatch geometries (left)

Connect to EQuIS Databases

- EQuIS table relationships are recreated in ArcGIS making it easy to incorporate facility information in GIS analysis or geoprocessing.
- Automatically place sample locations on maps.
- All layers use a customizable facility-specific symbol Style Gallery, helping standardize maps for production.



Partner

Copyright © 2010 by EarthSoft, Inc. All Rights Reserved.

